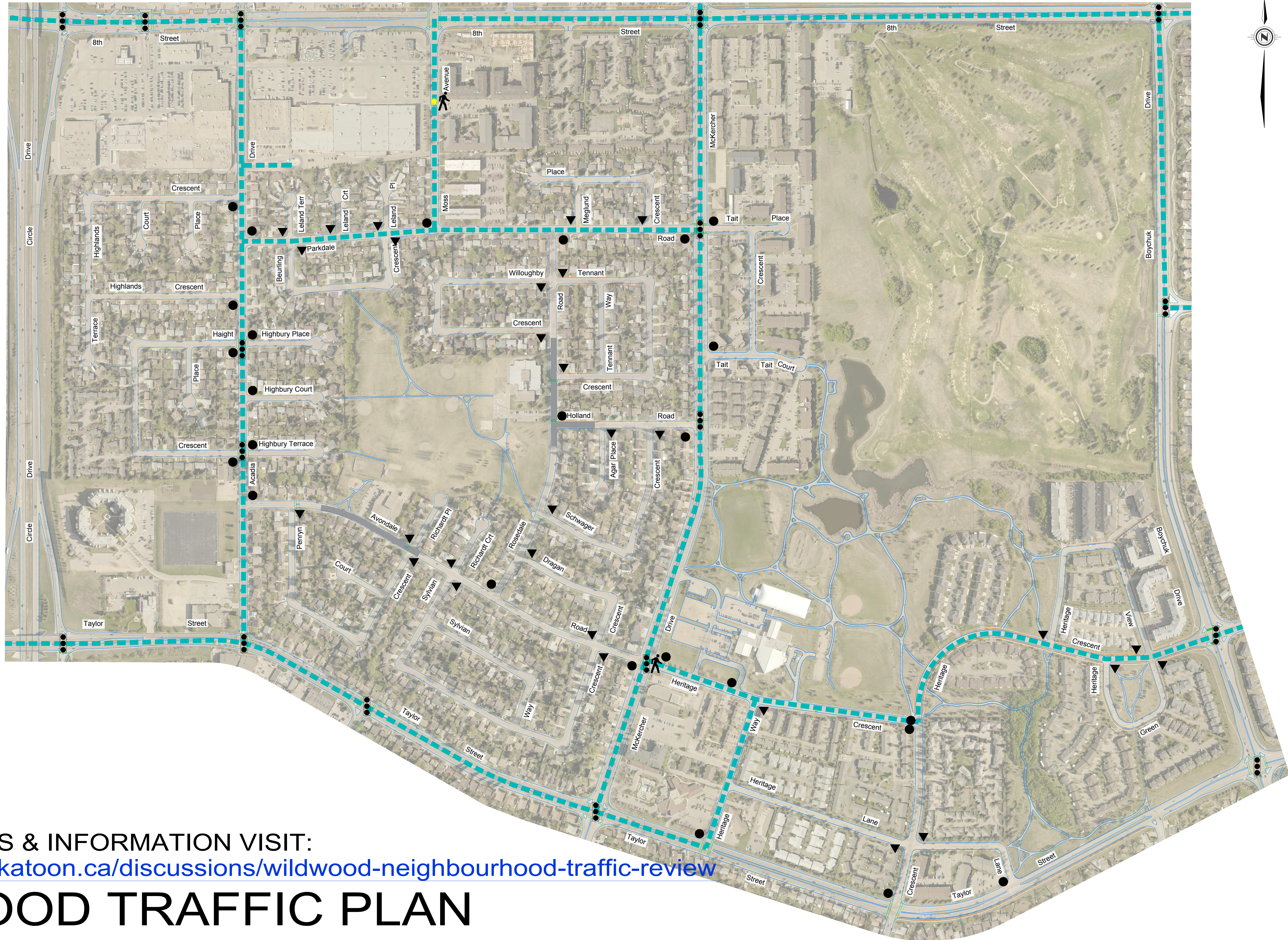


LEGEND

- EXISTING STOP SIGN
- ▼ EXISTING YIELD SIGN
- BUS ROUTE
- SCHOOL ZONE
- EXISTING TRAFFIC SIGNAL
- EXISTING PEDESTRIAN ACTUATED SIGNAL LOCATION
- EXISTING ACTIVE PEDESTRIAN CORRIDOR SIGNAL LOCATION



FOR COMMENTS & INFORMATION VISIT:

<http://shapingsaskatoon.ca/discussions/wildwood-neighbourhood-traffic-review>

WILDWOOD TRAFFIC PLAN